



BLUE CORNER CONSERVATION PROGRAM

Welcome to Blue Corner Conservation

Throughout the year we run a series of marine conservation modules. Each module is 6 days long and is an intensive course covering different topics.

Interns can enrol in a single module, or link multiple modules together into a longer program.

Our conservation programs are unique training modules put together by marine biologist Andrew Taylor and run by his team of biologists and dive instructors. The programs are run out of Blue Corner Dive centre located on the beach in Nusa Lembongan island, Bali. A hotspot for marine biodiversity in the coral triangle!



Choose
your
modules

**MARINE ECOLOGY
& CORAL REEFS**

**REEF HEALTH
MONITORING**

**CORAL REEF
RESTORATION**

**MARINE
MEGAFUNA**

PROGRAM COSTS

Single week: USD \$560
Two weeks USD \$1020
Three weeks USD \$1500
Four weeks USD \$1940

All books and survey materials, certification, and use of dive gear are included in the course fees for the conservation modules. We will be doing LOTS of diving - minimum 10+ dives per week.

MARINE ECOLOGY & CORAL REEFS

Next Program Starts:
28 FEB 2021

check our website for full schedule

MODULE DESCRIPTION

The week starts with an in-depth "Introduction to Marine Ecology" lecture which ties in knowledge specific to the areas you will be diving in the Nusa Penida Marine Park. Each day then includes specific task-orientated diving and lectures in topics from coral health, marine invertebrates and tropical reef fish identification.

This module in species identification is required to then follow on with the Reef Health Monitoring Week.



CERTIFICATIONS

Project Aware Coral Reef Conservation
Padi Fish Identification

PREREQUISITES

Advanced Diver with good buoyancy

A highly recommended course for any diver with an interest in marine conservation!



COURSE COMPONENTS

Marine Ecology

Marine Fish

Physical Oceanography

Invertebrates

Coral & Coral Reefs

Environmental Impacts



www.BlueCornerConservation.org
Insta/Facebook: @bluecornerconservation
email: andrew@bluecornerdive.com



REEF HEALTH MONITORING

Next Program Starts:
7 MARCH 2021

check our website for full schedule

MODULE DESCRIPTION

In this week-long program we will learn about several survey techniques used to monitor coral reef health.

You will also learn to use standard Reef Check scientific survey techniques to monitor coral, fish and invertebrate species on a reef. Also, the Coral Watch Coral Health Chart to assess corals for bleaching.

We also practice several standardized survey techniques used by the Nusa Penida Marine Park's long term monitoring project.

CERTIFICATIONS

PADI Research Diver
Reef Check EcoDiver

COURSE COMPONENTS

Survey Methods

Coral Watch

Reef Check

Fish Surveys

Substrate Surveys

Marine Monitoring

PREREQUISITES

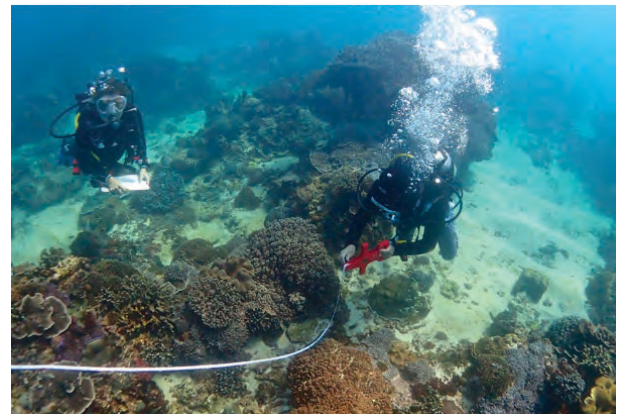
Advanced Diver with good buoyancy

RECOMMENDED COURSE PAIRING

MARINE ECOLOGY
& CORAL REEFS



REEF HEALTH
MONITORING



CORAL REEF RESTORATION

Next Program Starts:
6 DEC 2020

check our website for full schedule

MODULE DESCRIPTION

This program is conducted as a workshop in which you take part in Blue Corner Marine Research's ongoing coral restoration project.

During this week you will learn about the science of restoration ecology and how it applies to marine environments. You will also learn several techniques in coral propagation, monitor nursery corals and transplant corals onto modular reef structures.

Taught by our in-house marine biologist and certified Ecological Restoration Practitioner.

CERTIFICATIONS

PADI Coral Restoration

PREREQUISITES

Advanced Diver with good buoyancy

COURSE COMPONENTS

Restoration Ecology

Physical Restoration

Biological Restoration

Coral Transplantation

Coral Nurseries

Penida Restoration Case Study



Check out our Restoration
Project Description & Updates
www.bluecornerconservation.org



Interested in coral restoration but don't have time for a full week commitment? We also run 1-day and 2-day coral restoration experiences.



www.BlueCornerConservation.org
Insta/Facebook: @bluecornerconservation
email: andrew@bluecornerdive.com



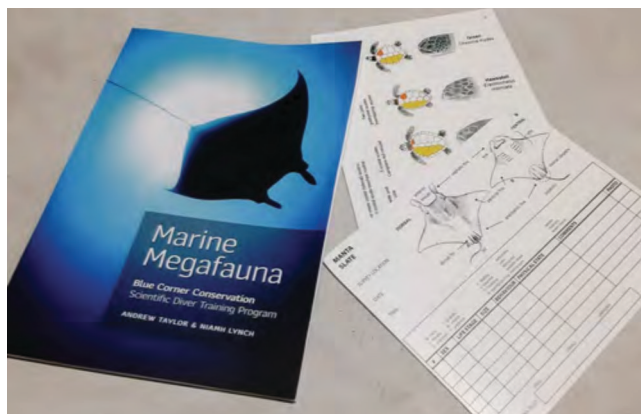
MARINE MEGAFAUNA

Next Program Starts:
13 DEC 2020

check our website for full schedule

MODULE DESCRIPTION

This week is all about mega-fauna! During this week you will learn about the biology of elasmobranchs (Sharks & Rays) and turtles as well as get up close and personal studying our local manta ray population. Collecting identification photos of the mantas as well as learning about other species sharks & rays in the Nusa Penida Marine Park.



CERTIFICATIONS

PADI/MMF Manta Conservation
Project Aware Shark Awareness

PREREQUISITES

Advanced Diver with good buoyancy



COURSE COMPONENTS

MegaFauna of Penida

Manta Rays

Sharks

Sunfish / Mola

Turtles

NUSA PENIDA MEGAFAUNA SEASONS:

	Manta Rays	Sunfish (Mola)	Turtles	Reef Sharks	Pelagic Shaks
JAN					
FEB					
MAR					
APR					
MAY					
JUN					
JUL					
AUG					
SEP					
OCT					
NOV					
DEC					

SCIENTIFIC DIVING PROGRAM (3 weeks)

Next Program Starts:
21 FEB 2021

check our website for full schedule

PROGRAM DESCRIPTION

The Scientific Diver Program is a 3 week intensive training program.

The program is designed to meet all the competency standards of the *European Scientific Diver* qualification, as well as the standards for Scientific Diving set by the *American Association of Underwater Sciences*. The course is aimed towards anyone interested in working in the environmental consulting industry or for conservation NGO's and looking to get certified in this internationally recognized certification.

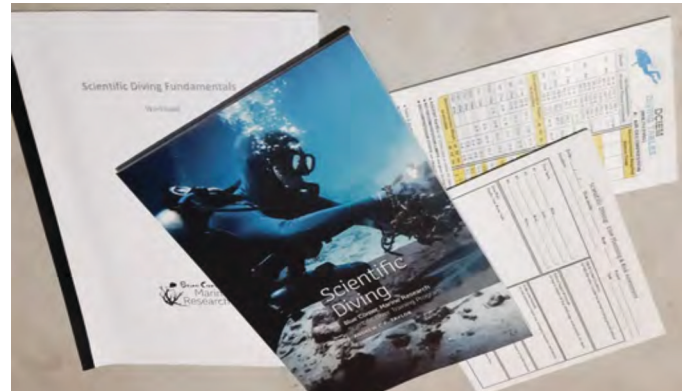
During the first week students learn safety standards for working underwater. Topics include advanced dive planning, dive accident management, risk assessment and use of specialized dive equipment. This week has a theory component emphasizing physics, physiology and decompression theory.

After completing the first "Scientific Diving Fundamentals" module students then have a week learning about marine ecology and a week monitoring the reefs.

Week 1: **SCIENTIFIC DIVING FUNDAMENTALS**

Week 2: **MARINE ECOLOGY & CORAL REEFS**

Week 3: **REEF HEALTH MONITORING**



CERTIFICATION

CMAS Scientific Diver



CMAS Scientific Diver certification meets the standards of the European Scientific Diver Qualification

Additional Certifications included:

Reef Check EcoDiver

PADI Research Diver

AWARE Coral Conservation & Fish ID

PREREQUISITES

Rescue Diver with current First Aid
20+ logged dives

PROGRAM COSTS

3 week program = USD \$1500

Includes:

- SD Training Pack (Textbooks - "Scientific Diving", "Marine Ecology", & "Reef Health Monitoring"; Workbooks; Underwater slates)
- at least 30 dives
- use of dive equipment

ADVANCED SCIENTIFIC DIVER (6 weeks)

Next Program Starts:
21 FEB 2021

check our website for full schedule

PROGRAM DESCRIPTION

At Blue Corner we have created a unique program which combines the professional industry certification of *European Advanced Scientific Diver* (CASD - certified through CMAS) with several other exciting courses. During this program you will learn to become a confident member of a scientific diving team while planning and leading dives in advanced diving conditions. You also learn about different equipment configurations and gas mixes, basic servicing and compressor use.

The program begins with our "Scientific Diving Fundamentals" week and follows our Scientific Diving Program. All four of our conservation modules are included as listed below.

6 WEEKS:

SCIENTIFIC DIVING FUNDAMENTALS

MARINE ECOLOGY & CORAL REEFS

REEF HEALTH MONITORING

CORAL REEF RESTORATION

MARINE MEGA FAUNA

ADVANCED SCIENTIFIC DIVING

CERTIFICATIONS

CMAS Advanced Scientific Diver
PADI Research Diver
Reef Check EcoDiver
AWARE Coral Conservation & Fish ID
PADI Coral Reef Restoration
MMF Manta Ray Conservation
PADI Self-Reliant Diver
PADI Full-Face Mask Diver
PADI Equipment Specialist

PREREQUISITES

Rescue Diver with current First Aid
20+ logged dives

By the end of the course you must have at least 100 logged dives for certification as CMAS Advanced Scientific Diver



COURSE PRICE **\$2700**
(6 weeks)

**PADI
Divemaster
Add-on:**

As some of the theory and skills is similar between the Scientific Diving Fundamentals week and Divemaster certification, you can continue on and complete the remaining skills and workshops of the PADI Divemaster course at Blue Corner Dive over 4 weeks for a discounted price of USD \$750 (regular price of Divemaster internship at Blue Corner Dive price is USD \$950).

Additional fees for Divemaster course are the PADI Crewpack (USD \$265 can be purchased from us or elsewhere) + PADI membership and DM application (AUD \$220 payable directly to PADI).

www.BlueCornerConservation.org
Insta/Facebook: @bluecornerconservation
email: andrew@bluecornerdive.com

 Blue Corner
Marine
Research

SCIENTIFIC DIVEMASTER PROGRAM

CMAS Scientific Diver



PADI Divemaster

CMAS Scientific Diver:

Professional training for working underwater as part of a scientific team



PADI Divemaster:

Training to become a dive guide, plan and organize dive programs, gain confidence underwater and take a leadership role



Contact us for a custom schedule!
Divemaster Program can be completed before OR after Scientific Diver modules

OPTION 1:

Scientific Divemaster

SCIENTIFIC DIVER PROGRAM
(3 weeks)



DIVEMASTER ADD-ON
(4 weeks)

\$2250
(7 weeks)

Program price is based on the price of 3 week Scientific Diver (USD \$1500) plus the 4 weeks of the PADI Divemaster course for a discounted price of USD \$750 (regular price of Divemaster internship at Blue Corner Dive price is USD \$950). For a total 7 week course price of \$2250

OPTION 2:

Advanced Scientific Divemaster

ADVANCED SCIENTIFIC DIVER
(6 weeks)



DIVEMASTER ADD-ON
(4 weeks)

\$3450
(10 weeks)

Program price is based on the price of 6 week scientific program (USD \$2700) plus the 4 weeks of the PADI Divemaster course for a discounted price of USD \$750. For a total 10 week course price of \$3450

EXTRA COSTS

Additional fees for Divemaster course are the PADI Crewpack (USD \$265 can be purchased from us or elsewhere) + PADI membership and DM application (AUD \$220/ USD \$150 payable directly to PADI).

PADI Crewpack \$265
PADI Application \$150

Students are responsible for their own meals and accommodation throughout the course as well as transport to and from the island.

Want MORE?

PADI Instructor Development Course



LOGISTICS

ACCOMODATION

Blue Corner Dive has a dormitory for students (\$15/bed/night for AC dorm or \$10 for fan bed). This can be a nice social option for either the first few nights while you get to know the island, or even for the entire time of your course. If you choose to stay in our on-site fan dorm during the course we offer students weekly rates of \$50/week.

Depending on the time of year you can find a basic room for a long term stay around \$80-150 (IDR 1.000.000 - 2.000.000) /week - depending on comfort level. Living Room bungalows is a short walk from Blue Corner and offers garden rooms with a shared kitchen & pool for \$140/week. There are also many higher budget options available here on the island all the way up to private villas.

GETTING TO LEMBONGAN

Nusa Lembongan island is easy to get to from mainland Bali. Most speed boat ferries depart from Sanur Beach in Bali and arrive into Lembongan at either Jungutbatu Harbor or Mushroom Bay. First boat of the morning is at 8:30am (Glory Express) and the final boat of the day is 5:30pm (Rocky Fast Cruise boat).

If you purchase your tickets in advance (either by emailing one of the boat companies or we can help you make a booking) then usually the ticket will include either pick up from the airport/ or hotel in Bali and drop off to the diveshop here in Lembongan. Boat companies we recommend are: Glory Express, D'Camel , Rocky Fast Cruise.



VISAS

When you arrive in Bali, you will be given the option to attain a FREE Visa on Arrival which is valid for 30 days before it is required you leave the country, OR a 30 day PAID Visa on Arrival which is extendable for an additional 30 days.

We recommend all interns enrolled for more than 3 weeks choose to purchase the visa, as it allows flexibility should you, like us, decide to give everything else up and live on a beach for a bit. For students interested in longer stays in Bali, there are several visa agents in Bali which may be able to help with other kinds of visas if contacted in advance.

**** DUE TO COVID-19 TRAVEL RESTRICTIONS, VISA REGULATIONS HAVE CHANGED -- contact us for updated information.**



INSURANCE

We strongly recommend all students to carry sufficient travel insurance to cover both diving or other medical emergencies.

Worldwide dive insurance plans for both short and long trips are available through the Divers Alert Network (www.dan.org)

EQUIPMENT

Students enrolled in our Scientific Diver Course require the following items, and we recommend them for all programs:

SMB (Safety Marker Bouy) & Reel
Dive computer
Dive Mask

For enhanced enjoyment of the course, students may want to bring their own:

Underwater camera
Wetsuit (5mm during June-Oct / 3mm Nov-May)
Fins (currents are strong here so have good ones!)
BCD & Regulator

Basic dive gear is available for use during the course from Blue Corner Dive.



Blue Corner Marine Research
Registration Form for Scientific Diver Program

Name: _____

Email: _____

Postal Address: _____

Nationality: _____

Date of Birth: _____

Program Enrolled in (check all that apply):

- Scientific Diver Foundations
- Coral Reefs & Marine Ecology
- Reef Health Monitoring
- Coral Restoration Workshop
- Marine Megafauna Week
- PADI Divemaster

Start Date: _____

Current SCUBA certification & Agency: _____

First Aid/ CPR certificate: _____

Date of Last Dive: _____

Number of Dives: _____

Are you enrolled to take other PADI courses at Blue Corner Dive before/after the Scientific Diver Program? If so which courses and what dates: _____

Are you bringing your own dive equipment?

- Yes – full set
- I will need to use gear listed below,

Blue Corner Dive provides dive equipment free for use during courses, however charges for lost or damaged gear. If you are needing to use Blue Corner Dive's equipment during the course please check and list sizes below:

- BCD –size: XS S M L
- Regulators
- Wetsuit: XXS XS S M L XL
- Fins – size: _____
- # of weights used: _____ kg

Have you been involved in scientific diving previously? If so describe:

Do you have an education background in Ecology/Marine Science? _____

Date of arrival to Nusa Lembongan: _____

Name of accommodation on Lembongan: _____